

# Plan VZ - Model 1467

Permit Set - 6/9/2020

**AREAS**  
 LIVING: 1,467 SF  
 PORCH: 96 SF  
 GARAGE: 484 SF  
 PATIO: 213 SF  
 TOTAL COVERAGE = 2,260 SF

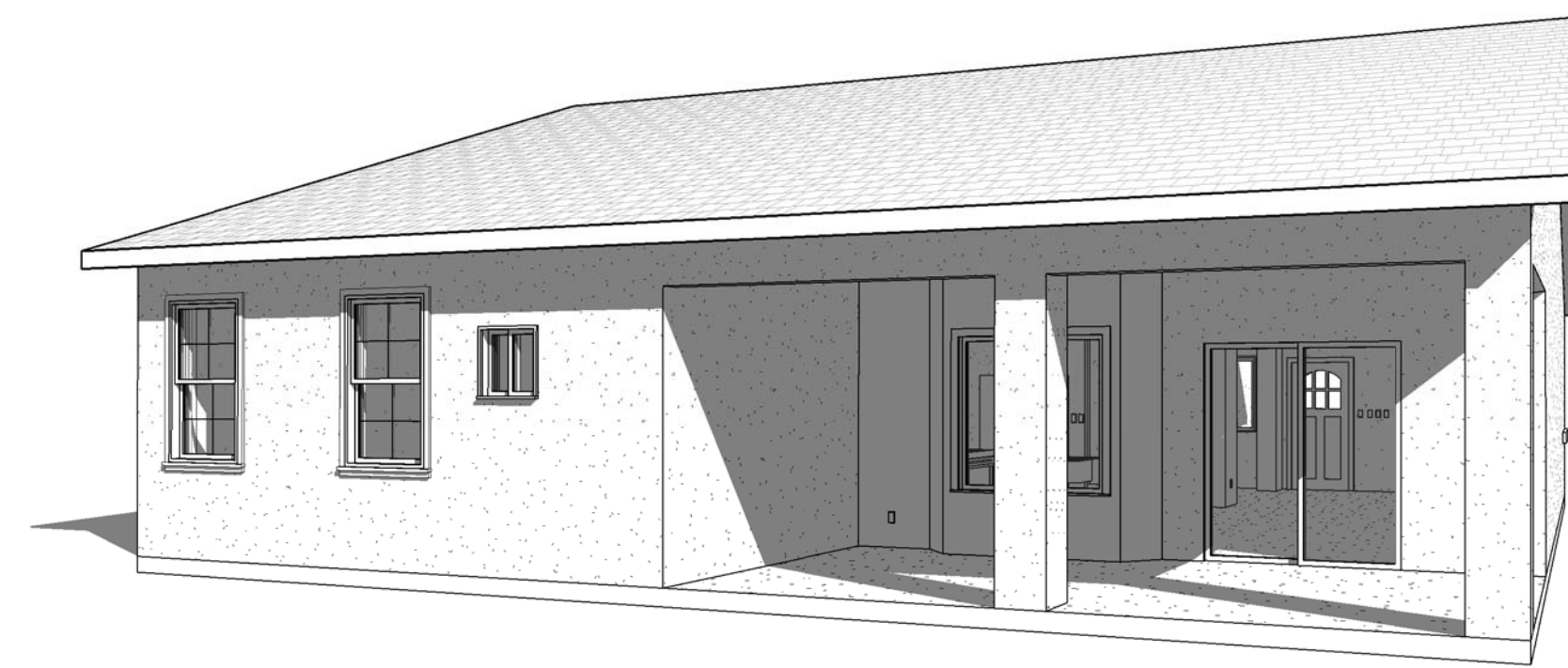
LOT AREA: 10,371 sqft  
 LOT COVERAGE: 21%

## Drawing List

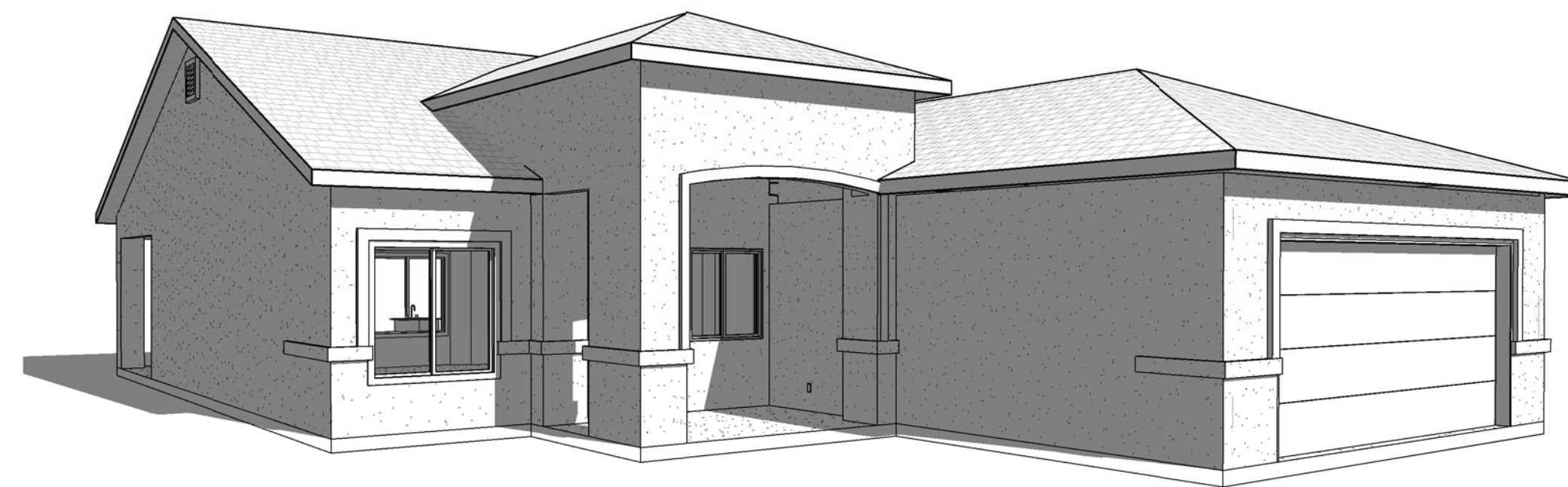
- A1 Floor Plan & 3Ds
- A2 Bracing Plan & Details
- A3 Exterior Elevations
- A4 Foundation Plan & Details
- A5 Framing Plan
- A6 Electrical Plan & Plumbing Schematics
- A7 Energy Efficiency Details



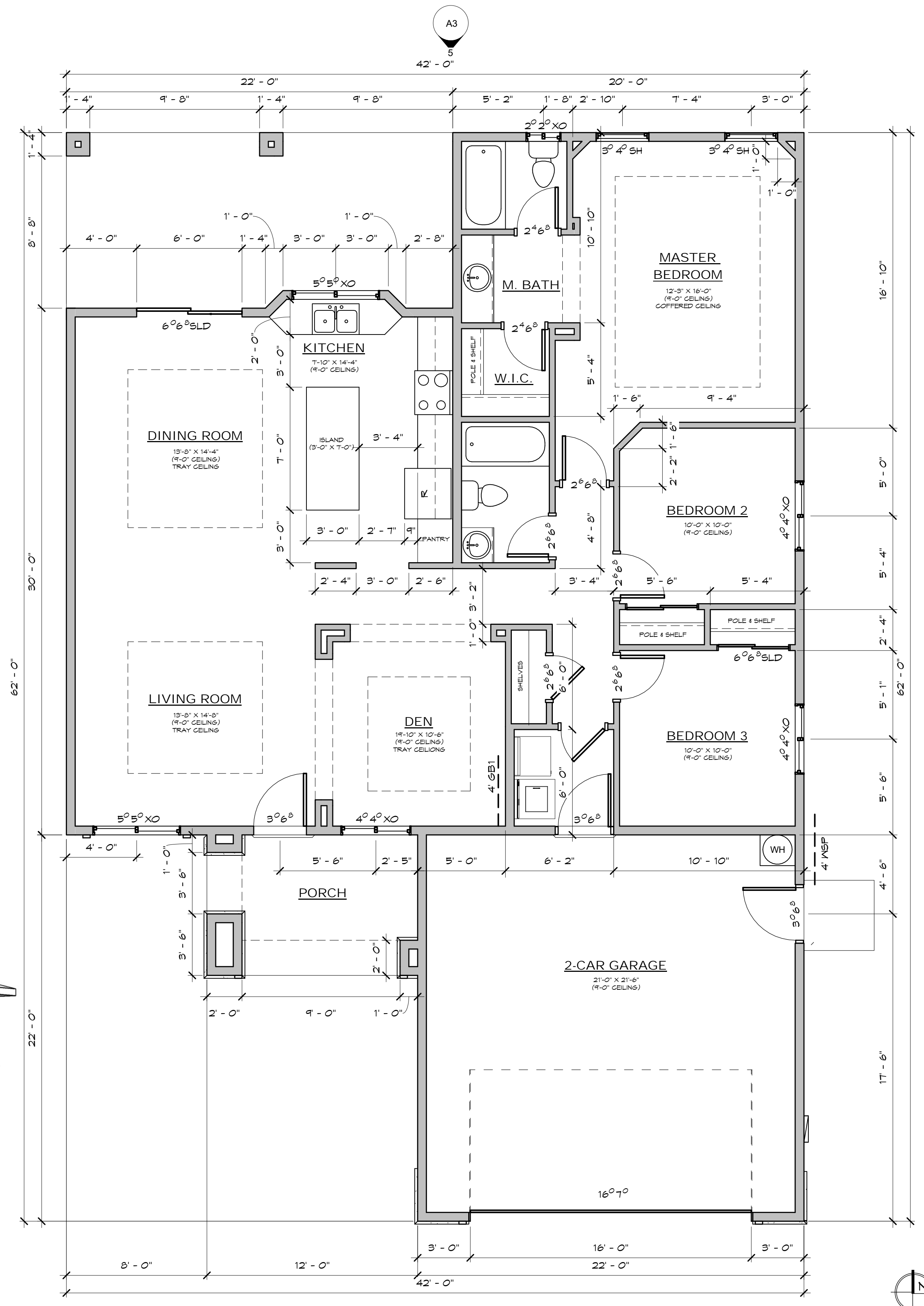
3D View - Front



3D View - Back



3D View - Side



Floor Plan

1/4" = 1'-0"

**BRACED WALL PANELS**

**WSP** 3/8" O.S.B. WALL SHEATHING FOR 2X4 STUDS SPACED 16" O.C. OR 2X6 STUDS SPACED 24" O.C. NAIL 8d's @ 6" O.C. AT EDGE AND 12" O.C. IN FIELD. PROVIDE MIN. 1/2" DIA. A.B.'s W/ 1/4"x3"x3" PLATE WASHERS @ 6'-0" O.C. W/ 2 MIN. PER PANEL. ALL VERTICAL JOINTS SHALL OCCUR OVER STUDS AND HORIZONTAL JOINTS OVER BLOCKING. PROVIDE DBL STUDS OR 3X AT EACH END OF BRACED WALL PANEL. REFER TO TABLE R602.3(3) FOR EXTERIOR SHEATHING & TABLE R602.3(1) OR R602.3(2) FOR INTERIOR LOCATIONS.

**GB1** 1/2" G.W.B. WALL SHEATHING SPACED A MAX. 24" O.C. NAIL 1-1/2" 11GA. ANNULAR RINGED ROOFING NAILS (OR G.W.B. NAILS EQUIVALENT) @ 12" O.C. AT EDGE AND 17" O.C. IN FIELD INCLUDING TOP AND BOTTOM PLATES. PROVIDE 1/2" DIA. WEDGE ANCHORS AT 6'-0" O.C. ALL VERTICAL JOINTS SHALL OCCUR OVER STUDS AND HORIZONTAL JOINTS OVER BLOCKING AT 24" O.C. REFER TO TABLE R602.3(1) FOR EXTERIOR LOCATIONS & TABLE R102.3.5 FOR INTERIOR LOCATIONS.

**ABWP** ALTERNATE BRACED WALL PANEL SHALL HAVE A WIDTH OF NOT LESS THAN 2'-8" AND A HEIGHT/WIDTH RATIO OF NOT LESS THAN 3.5:1 WHICHEVER IS GREATER. PANEL SHALL BE FACED WITH MIN. 3/8" O.S.B. SHEATHING NAIL 8d's @ 6" O.C. AT EDGE AND 12" O.C. IN FIELD OVER 2X6 MIN. STUD FRAMING. PROVIDE DBL STUDS OR 3X POST AT EACH END OF PANEL UNLESS NOTED OTHERWISE. ALL VERTICAL JOINTS SHALL OCCUR OVER STUDS AND HORIZONTAL JOINTS OVER BLOCKING. INSTALL SIMPSON HTTS HOLDOWN OR STRAP-TYPE ANCHOR PER TABLE R602.10.6.1 AT EACH PANEL END UNLESS NOTED OTHERWISE. INSTALL MIN. 2 ANCHOR BOLTS AT QUARTER-PANEL POINTS. A CONT. FOOTING W/ MIN. #4 TOP AND BOTTOM SHALL RUN ENTIRE LENGTH OF BRACED WALL LINE-LAP REINFORCEMENT MIN. 40 BAR DIAMETER. REFER TO R602.10.6.1

**NOTE:** SEE DETAIL ON OTHER SHEET.

1. EXTERIOR BRACED WALL LINES SHALL HAVE A BRACED WALL PANEL LOCATED AT EACH END OF THE BRACE WALL LINE WITH WOOD STRUCTURAL PANEL BRACING. TWO EXCEPTIONS ALLOW BRACED WALL PANELS TO BEGIN UP TO 6 FEET FROM END OF BRACED WALL LINE.

EXCEPTION 1: A MINIMUM 24" WIDE PANEL IS APPLIED TO EACH SIDE OF THE BUILDING CORNER.

EXCEPTION 2: AN APPROVED HOLDOWN IS INSTALLED AT THE END OF EACH BRACED WALL PANEL CLOSEST TO THE CORNER OF THE WALL.

2. ENTIRE BUILDING EXTERIOR TO BE FULLY SHATED WITH 3/8" EXTERIOR GRADE OSB SHEATHING

CONTENIDO  
 Floor Plan & 3Ds

Plan 1467  
 Yuma, Arizona 85365

PROYECTO  
**INNOV-R**  
 DESIGN + CONSTRUCTION  
 VICTOR M. SUZMAN JR., AIA  
 20500 W. ALPINE  
 VICTOR@INNOV-R.COM  
 SAN LUIS, AZ 85344

Revisiones		
#	Fecha	Descripcion



PLANO No.  
**A1**